

MESA LINDA LOGISTICS CENTER

±406,138 SF

AVAILABLE FOR SALE OR LEASE

9260 MESA LINDA STREET, HESPERIA, CA 92570



Newcastle | PARTNERS

Voit

REAL ESTATE SERVICES

RYAN LAL, SIOR

Senior Vice President, Partner

909.545.8020

RLal@Voitco.com

License #01854104

DANTE BORRUSO

Vice President, Partner

909.775.4475

DBorruso@Voitco.com

License #02086368



VISIT OUR
WEBSITE



VIEW
TOUR VIDEO

PROPERTY FEATURES

- ±406,138 SF, Class A Building
- 36' Minimum Clear Height at First Bay
- ±3,567 SF First Floor Office
- ±3,141 SF Second Floor Mezzanine
- ±17.54 Acres
- 50' x 56' Typical Bay Spacing
- 54 Dock High Positions 9' x 10'
- 2 Ground Level Doors 12' x 15'
- 219 Auto Parking Stalls
- 57 Trailer Parking Stalls
- 8" Thick Floor Slab, 4,000 psi
- 185' All Concrete Secured Truck Court
- 4-ply Built-Up Roof System
- 2.5% Skylights
- 4,000-Amp Underground Pull Section, w/ 4,000-Amp Service Panel Installed (verify)
- LED Lighting System w/ Motion Sensors at an Average of 20 fc aff
- 2 Air Changes Per Hour
- ESFR, K25.2, 50 psi
- Close Proximity to the 15 Freeway

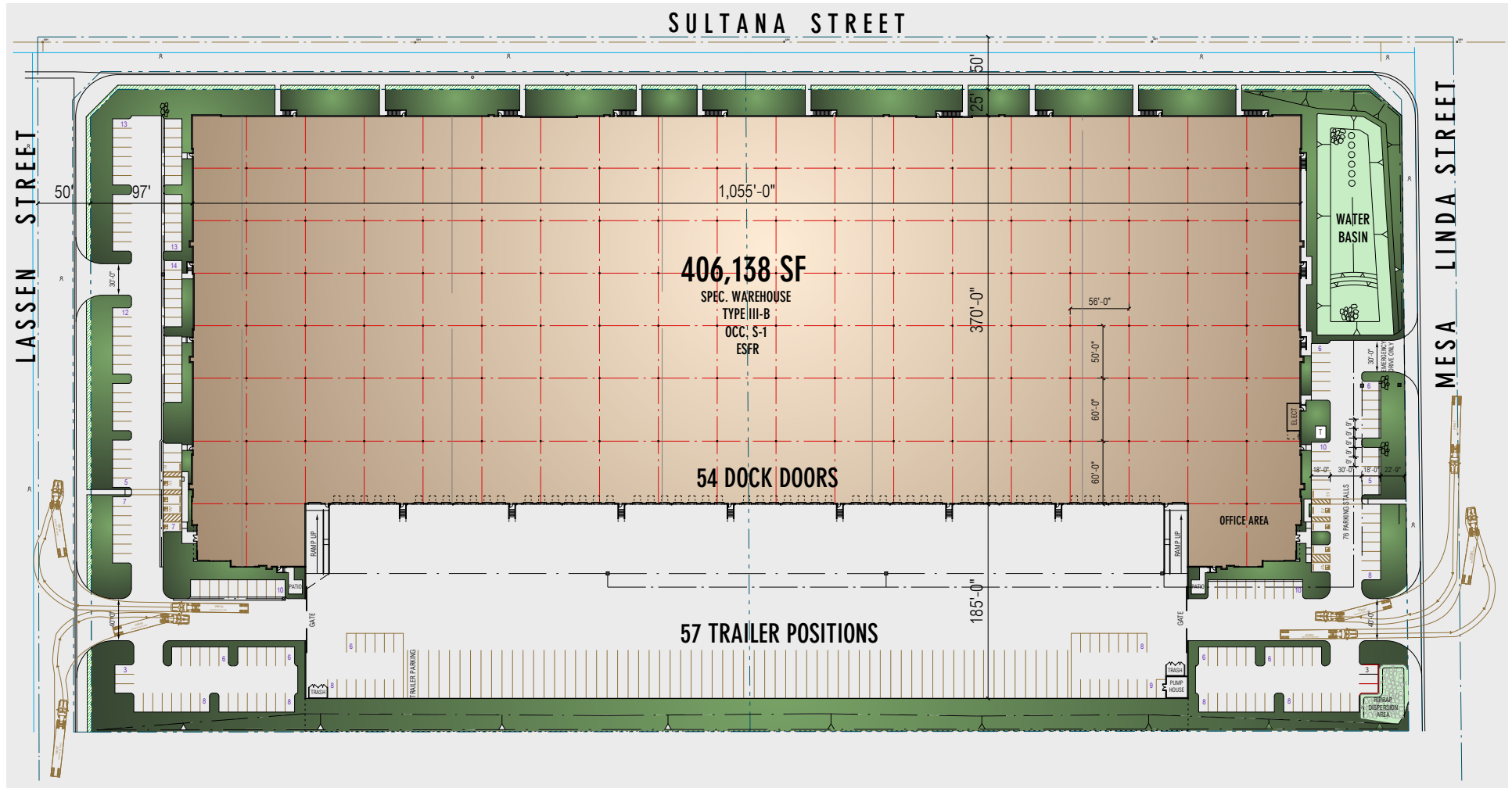


RYAN LAL, SIOR
Senior Vice President, Partner
909.545.8020
RLal@Voitco.com
License #01854104

DANTE BORRUSO
Vice President, Partner
909.775.4475
DBorruso@Voitco.com
License #02086368

Voit
REAL ESTATE SERVICES

SITE PLAN

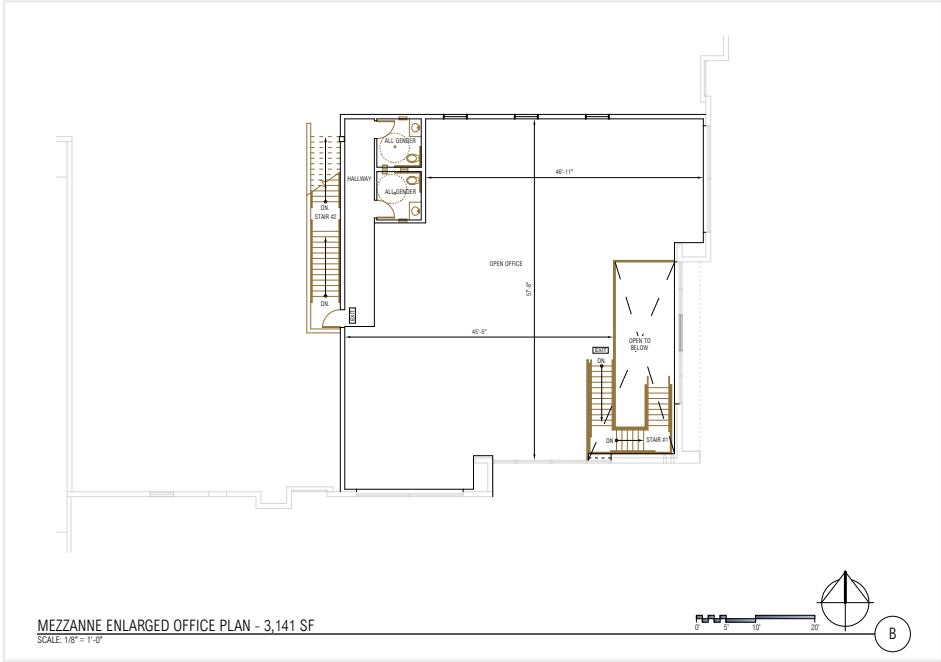
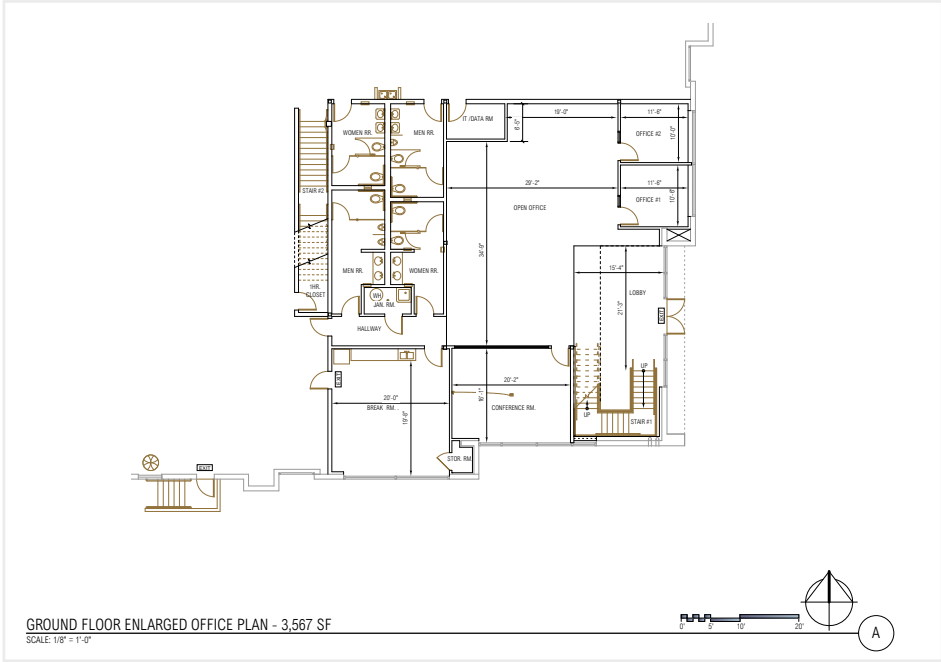


RYAN LAL, SIOR
Senior Vice President, Partner
909.545.8020
RLal@Voitco.com
License #01854104

DANTE BORRUSO
Vice President, Partner
909.775.4475
DBorruso@Voitco.com
License #02086368

Voit
REAL ESTATE SERVICES

OFFICE PLANS



RYAN LAL, SIOR
Senior Vice President, Partner
909.545.8020
RLal@Voitco.com
License #01854104

DANTE BORRUSO
Vice President, Partner
909.775.4475
DBorruso@Voitco.com
License #02086368

Voit
REAL ESTATE SERVICES

DISTANCE MAP



RYAN LAL, SIOR
Senior Vice President, Partner
909.545.8020
RLal@Voitco.com
License #01854104

DANTE BORRUSO
Vice President, Partner
909.775.4475
DBorruso@Voitco.com
License #02086368

Voit
REAL ESTATE SERVICES

MESA LINDA LOGISTICS CENTER

±406,138 SF

AVAILABLE FOR SALE OR LEASE

9260 MESA LINDA STREET
HESPERIA, CA 92570

For Additional Information, Please Contact:

RYAN LAL, SIOR

Senior Vice President, Partner
P 909.545.8020
RLal@voitco.com
Lic # 01854104

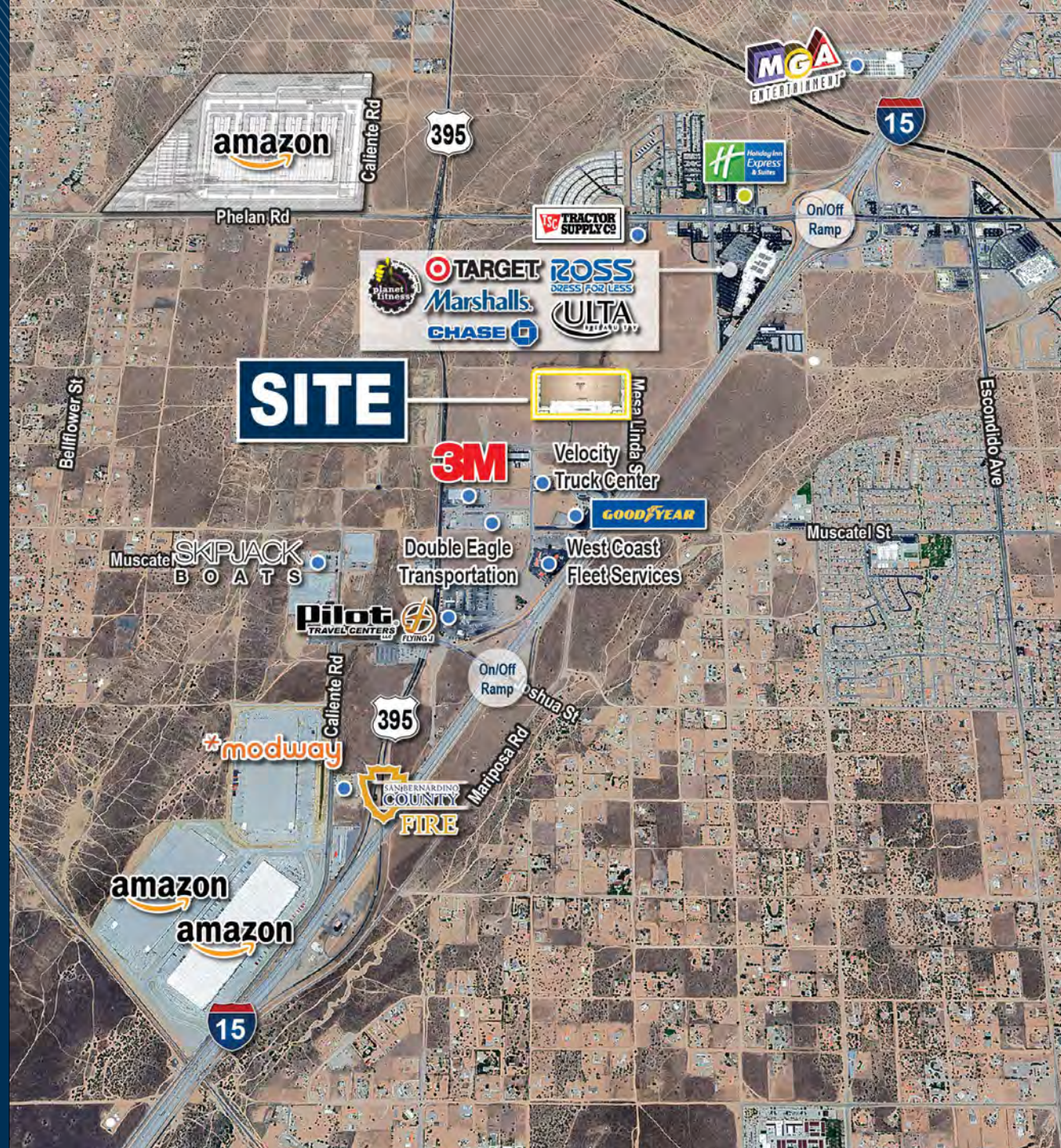
DANTE BORRUSO

Vice President, Partner
P 909.775.4475
DBorruso@voitco.com
Lic # 02086368

3280 E. Guasti Road, Suite 100
Ontario, CA 91761
909.545.8000 | 909.354.3253 Fax
www.VoitCo.com

Voit

REAL ESTATE SERVICES



Licensed as Real Estate Salespersons by the DRE. The information contained herein has been obtained from sources we deem reliable. While we have no reason to doubt its accuracy, we do not guarantee it. ©2025 Voit Real Estate Services, Inc. All Rights Reserved. License #01991785.